

Big Challenge for Theatre Group
The Clyde Theatre Group's upcoming production, *Noises Off*, is one of its biggest challenges to date.

The complex set for the comedy requires a two-storey building on a revolving stage which is a major undertaking for the design and construction crew because of the small stage in the Clyde memorial hall.

Noises Off by English playwright, Michael Frayn, premiered in London in 1982 and has been described as the funniest farce ever written. It's a play within a play where the audience gets to see the cast acting in a not-very-good play on stage as well as what is going on backstage. (And there's plenty!)

The farce was a smash hit and remains so with repeat seasons at London's West End and New York's Broadway. Frayn has rewritten parts of the play over the years and has also removed dated references.

The play has a cast of nine and is directed by Joy Ramsay. It runs from April 9-16 at the Clyde Memorial Hall.

.....

Earnsclough Hall Fair Expands

The Earnsclough Community Society has decided to hold a second fair each year because of popular demand.

Society president and fair organiser, Angela McNaught says there were requests from members of the public and stallholders to hold an autumn fair as well as the one held in November.

The first fair was held three years ago and it has grown in size with some stallholders now setting up outside the hall.

A new addition will be a second-hand book stall and donations of books will be gratefully received. Phone Angela on 4493 237. Books will be collected or they can be dropped off at the House of Travel in Alexandra.

The fair will be held on **Sunday**

May 1.



Published by Promote Dunstan Inc

Mystery Solved!

Clyde Railway Station had a mystery to solve.

There was a large, solid and very heavy safe in what used to be the ticket office.

It was locked and the key? Well, that was long gone.

What treasures lay inside?

A locksmith was called.

The safe was examined.

A hole, which took forever to drill, was drilled.

Anticipation rose.

"Sorry! I

need to

drill another

hole."

Anticipation

rose

higher.

"Sorry! I'll

have to

come back because I've run out of

time."

The locksmith duly returned.

He drilled ... and drilled...and drilled.

Anticipation reached a peak as the

safe door swung open to reveal ...



Actually, this second photo should

have been held over until our

April 1st edition!!

Colourful Kiwi-Indian Wedding

It was a sight never before seen in Clyde when joyful bridegroom, Sunny Sharma, accompanied by family, friends and musicians, danced his way up Naylor St to the home of his bride, Nicola Cockcroft on the day of their marriage in February.

The Baraat, the traditional Punjabi wedding procession ended at the home of John and Chris Cockcroft with the Milni, a ceremony where the families and friends of the bride and groom exchange garlands before the marriage ceremony in the garden.

Sunny's parents, Nareesh and Shashi Sharma travelled from Leeds for the wedding and were joined by about 30 members of their family and friends living in New Zealand, Canada and the UK.

A large pre-wedding gathering, Mehndi night, was a blend of Kiwi and Indian cultures. Female guests were invited to have their hands painted with henna. (The bride's hands, both sides, took three hours to paint). European guests were taught the bhangra, a traditional dance while Indian guests were introduced to the haka and poi dances.

Sunny and Nicola met in Spain eight years ago when they were volunteers assisting an English language programme. It was a long courtship with Sunny studying in Leeds and Nicola working in London.

They've now returned to their jobs in London leaving Chris and John with memories of an experience they will never forget.



Newly married Nicola and Sonny Sharma

Clyde Identities

She might not have been born in Clyde but Kath Hughes has lived here for the past 50 years so she has certainly earned the right to be called a local.

Kath was born in the English university town of Oxford and came to New Zealand with her family when she was three. Now in her 97th year, she landed up in Clyde almost by accident.

"Years ago I did my OE and when I got back to Auckland I found it so boring that I decided to live in the country," she says. "I found a job as a receptionist with the Tourist Hotel Corporation hotel at Mt Cook."

That was followed by a three year stint teaching children on high country stations and then she saw a job advertised by the Lands and Survey Department in Alexandra.

"I didn't know much about Alexandra but I stayed there for 23 years," she says.

A friend finally persuaded her to buy a house even though she could not afford it. The house was in Clyde and the vendor, who had already turned down three would-be buyers because she didn't like them, decided Kath was person to have her house.

An active sportswoman, Kath played squash, tennis, golf (she's a life member of the club) and swam three times a week until a couple of years ago. She joined the local Bridge Club 35 years ago and still plays three days a week.

"Clyde has not really changed although it's bigger and there's more going on in the main street. When I came here there was an orchard across the road. Now it's all houses," she says. "The one thing I don't like about Clyde is there are too many holiday houses and their owners don't really contribute anything to the town."

Fiercely independent, Kath never married after her fiancé was killed in Greece during the Second World War. She is not happy about growing old.

"I have macular disease so my eyesight is giving out," Kath says. "I manage to cook and iron my starched collars but the garden is the hardest to do and I can't see the colours of the flowers anymore. It's very frustrating when your brain is active and you are not able to do things you want to."

"But you pull yourself together and get on with life. I truly love being here in this community and although I am not looking forward to going into care, like Scarlett O'Hara (*Gone With The Wind*), I'll think about that tomorrow".

Wine and Food Harvest Festival

Two vineyards, McArthur Ridge and Legacy, are making their first appearance at this year's festival. Now in its 15th year, it takes place on Easter Sunday, March 27, in Clyde's historic precinct. The main road and Matau St, as well as Lodge Lane, will be closed to traffic at 7am. They'll reopen at 6pm or earlier depending on traffic and crowds. The festival runs from 10.30am to 4.30pm.

Celebrating the Bard

The rafters of St Michael's in Clyde will soon ring with words not usually associated with the Anglican church.

Clyde's historic church will become a stage where some of the greatest prose and poetry ever written in the English language will be performed by five experienced players.

"*Now That April's Here*" is a tribute to William Shakespeare who was born in April, 1564 and died in April, 1616. The programme contains familiar scenes and speeches from the Bard's plays.

Producer Rozena Hallum of Alexandra, herself an experienced actress, says it is not all heavy and serious.

"It'll be lightened by contemporary comic material on Shakespeare written by people such as Dudley Moore and Alan Bennett," she says. "There will also be a musical element".

The tribute to Shakespeare is the first of a number of cultural events envisaged by the two Anglican ministers, Lois Hurd-McKee and Helen Metzger who came to Clyde to care for and find a new purpose for the heritage building after the Anglican diocese decided to close the church for public worship.

The tribute will be given by Rozena, Kelly Keenan (Cromwell), Michael Metzger (Wanaka), Juliet Clark and Alice Stewart (both from Alexandra) and takes place on **Sunday, April 3 at 4pm**. Entry is free although donations are gladly accepted.

The 50 minute programme will be followed by a toast to the Bard with wine and food in the lounge to celebrate his birth and commemorate his death, 400 years ago.

Small Club: Big Achievement

Clyde Bowling Club is feeling very proud of itself – and with good reason.

For the first time ever, the club has made it into the national final of the sevens which takes place in Auckland in mid-March.

The men's team and the women's team each won their divisions in Central Otago. Club secretary, Lynn McArthur, says this is a fantastic achievement given that it has a relatively small membership of about 46 men and 16 women.

Each team will also have a manager who can step in and play if needed.

The club also has several members selected for Central Otago teams competing in national events in Auckland and Wellington this year.

The club is now planning various fundraising events to send their teams north. A car boot sale is planned for Easter Saturday, March 26, at the Bowling Club starting at 10am. Sites cost \$10 and the club would be pleased to accept donated goods for its stall. (Phone Lynne 449 2617 or Sydney 449 3290).

Orders for cheese rolls are now being taken - phone orders to Daphne Guise 449 2406 or Isla Whyte 449 2433.

Lodge Dunstan was thrilled to raise \$1100 for the Westpac rescue helicopter by selling apricots which had been donated by orchardist Harry Roberts and family.



Arts Trail A Huge Success

Local artists exhibiting their works on the Rail Trail are well represented in Clyde with eight locations showing paintings, glasswork, jewellery, ceramics and photography by 12 artists.

The arts trail, organised by the Central Otago District Arts Trust, stretches from Clyde to Middelmark and involves 41 artists located in 34 shops, bars, restaurants, galleries and cafes on or near the rail trail.

Arts trust co-ordinator, Maxine Williams says there were more sales of art works this year compared to last with sales particularly good in Clyde.

Now in its second year, Maxine says the Arts Trail is growing in strength and another arts trail will be held next year.

Earnsclough Country Fair

The annual fair, held in November for the past three years, has proved so popular that the Earnsclough Community Society is holding an autumn fair and invites everyone to come along to sample the food and browse the stalls on Sunday, May 1.

A large number of stalls (including some you don't see at local markets) will be set up in the hall so no worries if it is wet or cold. On the menu are barbecued sausages, cheese rolls and Devonshire teas. The fair starts at 10am and ends about 3pm.

High Calibre Performers at Clyde

For some time Clyde residents have known about the high calibre of actors and actresses appearing in productions by the Clyde Theatre Group. That was officially confirmed (again) at this year's Otago Southland Theatre Awards.

For the second consecutive year, the Clyde Group won both the best leading male and female in a play or revue. This year it was Kelly Keenan and Claire Mulholland, who appeared in *The Vicar of Dibley*.

Last year's winners were Mariane Maslin and Bruce McPherson for their roles in *Calendar Girls*. That's an amazing record when you consider this year there were nominees from 13 theatre shows throughout Otago and Southland, including **Dunedin and Inver...**

Good on yer Clyde!



April 2016

Dunstan News

Clever Planning Pulls It Off

Clyde Theatre Group deserves an award for proving it can rise to a challenge. The group's major annual production, held earlier this month, was the English comedy, *Noises Off*, and the set required a two-storey building which had to be turned around during the play.

Most productions use a revolving stage, but that was impossible on the Memorial Hall's small stage area. However, clever planning and construction skills by Jim McDonough (Jim's Home & Building Maintenance) produced an amazing set which was a triumph.

It is a toss-up as to who was more exhausted at the end of the play: the cast of nine under the direction of Joy Ramsay, racing up and down stairs, in and out of doors or chasing around the set – or the audience who at times, were left quite breathless with laughter.

New Premises for Cycling Business

Clyde's latest new building, under construction in front of the Clyde cinema, is to be leased by the cycling business, Bike It Now.

Bike It Now co-director, Duncan Randle, says they will continue to use half of what they already occupy in their premises next door, but the new building will allow the business to expand.

Builder and property developer Mark Laing always planned to build on that site but the interior has been designed to meet the needs of Bike It Now.

The company expects to move in late winter or early spring in time for the Rail Trail season.



Visitors from Wellington, John Toft, President of Watercolour New Zealand and Janine Jefferies inspect a painting by Cromwell artist, Rachel Hirabayashi, in Oliver's restaurant.

The Trust's next project is bringing the "Top Art" nation-wide exhibition to Alexandra. This is a collection of portfolios from NCEA Level 3 art students who achieved excellence in visual arts in 2015.

It is the first time this exhibition has come to Alexandra and can be seen at Alexandra Community House from May 2

Wine and Food Harvest Festival

It was another great day for Clyde as about four thousand people gathered in the heritage precinct to celebrate the area's grape harvest and the marvellous wine the growers produce.

Festival Convener, Louise Joyce, says it ranked as one of their best.

"There was a great atmosphere, few glitches and people enjoyed themselves," she says. "Even so, I have a list of about 30 details that need attention for next year."

"We greatly appreciate the support of the Alexandra Police, the Alexandra Bridge Club and businesses in the street. A big thank you also to residents who supply us with extra electricity and put up with the disruption. Without that support,

Promote Dunstan would not be able to hold the festival in such a unique surrounding."



Forgotten Your Wine?

Some people with poor memories left the Wine and Food Harvest Festival without picking up their bottle of wine from the Alexandra Bridge Club. If you still have your bottle number then ring Rory Butler on 03 448 9049 to arrange for collection.

Keep Your Mind Sharp and Play

Bridge

Bridge lessons are being offered to people interested in learning this challenging but fun card game.

The Alexandra Bridge Club, based in Sunderland St, Clyde, is holding classes every Tuesday until July 12 and welcomes any beginners or people who would like to refresh their game.

The cost is \$40 which includes course material and, for beginners, current club membership. Come along at 6.45pm for a 7pm start.

Phone Jean on 448 8991 to book.

Festival Profits

Promote Dunstan is often asked what happens to the money collected at the festival.

Here's a breakdown: it costs about \$45,000 to run the festival which is funded by Promote Dunstan (it does not receive sponsorship, grants or any form of funding).

Profits are spent on projects undertaken by Promote Dunstan. These include restoration of old graves in Clyde cemetery, heritage signs, bronze plaques in Clyde's pavements, the Clyde Railway Station and museum, the Matau St stone building, support for the Clyde Historical Museums, and reprints of five brochures including the three very popular Walk-Around-Series. Research is being done for the publication of a book

Clyde Anzac Service

The march to the War Memorial starts at 8.15am from Clyde Primary School and the service starts at 8.30pm, on April 25.

Shakespeare Readings Prove Popular

It was probably one of the biggest gatherings in recent years at St Michael's and All Angels Church in Clyde when about 50 people filled the pews last month for a tribute to William Shakespeare.

Directed by Rozena Hallum, "*Now That April's Here*", celebrated the bard's birth and commemorated his death in April,



Rozena Hallum and Juliet Clark raise their glasses in tribute to the Bard.

Memorable Experience Playing in Auckland

Two teams from the Clyde Bowling Club might not have been placed in the national finals but members certainly enjoyed the experience playing at the Hillsborough greens in Auckland last month.

The men's and women's teams did not qualify for the second day's play but certainly did not disgrace themselves. Both teams achieved some wins and losses.

Fundraising to help the teams get to Auckland raised more money than was needed and the surplus will be spent on club facilities.

150 Years Ago

"We remind owners of dogs that it is necessary to register them before the 1st of April, after which date the police have orders to destroy all unregistered dogs. The quantity of curs about our streets are become (sic) a perfect nuisance. Persons on horseback or driving (horse drawn) vehicles are constantly liable to accident through the barking of these brutes, and the sooner they are thinned out the better.



Rozena Hallum, Michael Metzger, Juliet Clark and Kelly Keenan perform in the church.

400 years ago. Familiar speeches from Shakespeare's plays were performed as well as a musical interlude to an appreciative audience.

Reverend Helen Metzger was thrilled with the response by the public while Reverend Lois Hurd-McKee said people were delighted to enjoy something a little different and they wanted more.

And more is to come: the Shakespearean tribute is the first of a number of cultural events proposed by the Anglican ministers who are looking after the heritage building for the Anglican diocese.

The next event at St Michael's ...

Saturday, April 30 : 10am-3pm. John Franklin, Spiritual Director and Academic Supervisor, Dunedin) will present '*Poem and Prayer*', where people can share their thoughts and offer insights on four poems. Please register with Rev Lois Hurd-McKee (4492 328 or email : lois.mckee@extra.co.nz] Bring your lunch and koha to assist with expenses.

Dunstan Times,

Micro-Chip Proves its Worth

The benefit of micro-chipping cats and dogs paid off for the owner of a friendly cat who visited a few people in Clyde recently.

The SPCA was contacted and, thanks to a micro-chip implant, Gage, a one year-old black cat, was reunited with his owner, Nicole Butler. But her address was a surprise because Nicole lives in Fernhill, Queenstown!

But Gage has a history of travelling. He was picked up in Frankton some weeks before his journey to Clyde. It is thought that he might have hopped into the back of a

sound-proof delivery truck which

stopped in

Clyde where

he made a

quick exit.

Certainly,

anyone travelling in a car

with him,

would not fail

to hear the

wailing and

howling he

performed

during the entire car trip back Queens-

town. Nicole is hoping the Clyde trip

might convince him that visiting people

in her neighbourhood where he is well

known, is a better option.

.....

A Reminder ...

Nominations close at

noon on Friday, May 20 for the election

of five parent representatives to the

Clyde Primary School Board of Trus-

tees. The voting roll and a list of candi-

dates will be available during school

hours. (Phone 4492 761)

Published by Promote Dunstan Inc

Earnsclough Hall Fair



A steady stream of people filled Earnsclough Hall for the Country Fair on May 1, eager to buy from a wide selection of food, plants, clothing, white elephant stalls, knitwear and crafts of all description. The tasty Devonshire teas proved so popular that the 70 scones baked by committee member Jane Robinson ran out and she had to make more. Earnsclough Community Society president and fair organiser, Angela McNaughton said more than \$800 was raised which will benefit the hall. The next fair will be held in November.

.....

Clyde ANZAC

Service



Walter Beveridge

(76) came from

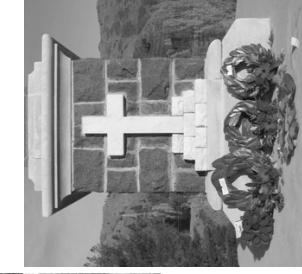
Alexandra for the

service. He says

the Clyde service

starts off his day of

commemoration.



Wreaths and poppies

laid at the

memorial

in Clyde.



news@promotedunstan.org.nz

Art Works Presented to Museum

Two pen and ink drawings of Clyde's heritage buildings were presented last month to the Clyde Historical Museum by Promote Dunstan.

The drawings are of Dunstan House and the Hartley Arms Hotel by Central Otago artist, the late Doug Ayson, a prolific and versatile artist. They were part of an exhibition of his art at Central Stories Art Gallery in August last year.

Promote Dunstan members felt the drawings were of value to the Clyde community and would also be appreciated by visitors to the museum.

The presentation was made at a morning tea to thank museum committee members and volunteers who ensure the museum is open during the tourist season.

The museums' committee now has three museums in its care - Blythe St, Briar Herb and the Clyde Railway Station. The Briar Herb Museum has been closed for some months because of concerns about safety and the fragility of some exhibits.

Clair Higginson, chair of the committee, says there have been discussions about the future of the museums and it may well be that Briar Herb and Blyth St come together under one roof.

"It might be a 10-year plan, Ms Higginson says, "but even that might be a little too ambitious."

The first step is to make an inventory of the exhibits in the Briar Herb Museum. That would be followed by a report and an estimate on costs to repair the buildings. A public meeting will also be called.

.....

Urgent Need for "Buddies" in Clyde

The Central Otago Family Works Buddy Programme has a desperate need for adults in Clyde to volunteer their services as grandparents.

Co-ordinator, Jan Bird says there are some children, aged between four and 12 from Clyde Primary School, who need an extra adult in their lives. Training will be given in June. If you can help, male and females or couples, ring (freephone) 0508 283 236 or email buddyco@psotago.org.nz



Museum curator John Hanning and Promote Dunstan president Rory Butler display the two pictures.

John Hanning moved to Clyde in 2009. Well, he's hardly a Clyde identity I hear you say. But he is by no means a 'newcomer'. Both sides of his family came here in 1865-66, a few years after the Dunstan gold rush. His parents were born in Clyde and John was born in Cromwell in 1942.

John's early years were spent in Clyde at his parents' orchard until they decided to move to Christchurch when he was about five.

Just over 60 years later, John has come back to his roots after living in Australia's gold coast and he explains why.

"Having quite a long family history, not just in Clyde but in other areas of Central Otago gave me a sense of identity, of being home. It was the place where I belonged."

After his family shifted to Christchurch, John returned during school holidays staying with his grandparents. The Hannings (Charlie and Mary) lived in Hazlett's house and the Davidsons (Joseph and Sarah) in what is now Olivers. The Davidsons bought Olivers in 1925 and converted the large store into two shops – a grocery, which they ran, and a drapery which was rented out. They also rebuilt the front of the house which John remembers as "a big, cold, draughty house!" But John has an even earlier connection. A son of Benjamin Naylor (Old Ben), who built the store in 1870, married a sister of John's grandmother.

John discovered recently that the grandfather of an aunt was Edward Ryan, owner of the Bendigo Hotel in Clyde in the 1860s. A letter that he found in the Clyde Historical Museum files is addressed to his great, great uncle about his appointment as Clyde's post master in the 1870s. As a friend of John's remarked, "Mention anyone in the area and John's related to them".

A strong family association with Lodge Dunstan was instrumental in John joining. His great, great grandfather ensured the lodge was built on its present site while his grandfather (Joseph) was a Master of the Lodge.

John is, more often than not, found at the Clyde Historical Museum in Blyth St.

"I started researching things, then I helped out, then became a committee member and one thing led to another, and I am now the museum curator."

Quite a lot has changed since John was a young lad in Clyde.

"It had a population of about 300 and I particularly loved the bare and barren hills. Now there is a huge growth of gorse and briar. Up the walking track where the reservoir is, there used to be a dam fed by a spring. As boys we'd go there to catch fish and frogs".

After John left Clyde, he worked and married in Christchurch, had children and was transferred to Auckland as the national sales manager for Fletchers. He then spent eight years on Australia's Gold Coast and after retiring in 2007 it was a toss-up – back to Auckland or to Perth where his sister and brother live. As John explains :

"History is important. If you don't know where you came from, how do you know who you are. If I hadn't had that feeling I would have gone back to Auckland or to Perth. I came back to Clyde."

Anzac Day in Clyde

A beautiful, crisp autumn morning brought about 500 people to the Anzac Service at Clyde's war memorial on April 25.

It also marked the centenary of the first commemorative services held and the erection of a wooden cross, the world's first permanent memorial to the Anzacs near Masterton.

The parade from Clyde School to the memorial included servicemen, air training cadets, police, members of the Clyde Volunteer Fire Brigade and school pupils, led by the Alexandra Pipe Band.

The service was a little different this year. Pilot Nigel Forester flew his bi-plane along the Clutha River and two shells fired from a 25 pounder gun eerily reverberated around the hills. It was just one gun but the noise gave just an inkling of what the bombardment by many guns would have been endured by the Anzacs as they waded ashore at Gallipoli, a hundred and one years ago.

Clyde Cyclist Aims to Be "Best in the World".

A promising young Clyde cyclist was nearly speechless after receiving a surprise donation towards her fundraising efforts to represent New Zealand overseas.

Nicole Shields (16) has been selected as a member of the team competing in World Junior Track Cycling Championships in Switzerland and at an international meet in Melbourne later this year.

The donation of \$1000 was made by The Four Marketeers, four women who organise the Alexandra Summer Markets.

Her interest in cycling began when her grandparents took her to Invercargill's velodrome. About four years ago she began taking cycling seriously, acquiring a coach, Simon Smith, of Alexandra.

She has already represented her country in Australia, winning a second in 2014 and a first place last year. In February she won the individual pursuit for her age group in the New Zealand nationals which secured her a place on the team for Switzerland.

Nicole needs to raise about \$12,000 to cover the trip to the Melbourne meet in late June, training in Cambridge and two and a half weeks in Switzerland in late July.

"I'm looking forward to it but I've still got a lot of hard training to put in before then, but it'll be worth it," she says. "I just want to be the best in the world".

(If you would like to help Nicole, email lojo.rico@xtra.co.nz or phone 4492 119)

Knitting Group Wanted... With the winter months almost upon us, a *Dunstan News* reader wonders if anyone is interested in starting a group to teach people how to knit. If you would like to help out, please contact Leanne on 4492700.



Clyde Volunteer Fire Brigade Members



Tracy Cruickshank member of the Four Marketeers, presents a cheque for \$1000 to cyclist, Nicole Shields.

Restored Gun Fired in First Local Anzac Day Celebrations.

A trio of local men was responsible for the 25 pounder gun making its first appearance at April's Anzac service in Clyde.



L to R – Alan Pratley, Brian Donaldson and John Tilleyshort

The gun is a familiar sight outside the District Club in Alexandra until it disappeared for several months of restoration by Brian Donaldson, Alan Pratley and John Tilleyshort.

The gun was built in 1944 with a range of 12.4 km. It was fired at the 1974 Commonwealth Games in Christchurch but, when it was decommissioned, moving parts were removed and other parts were welded together. The barrel was jammed by a hunk of metal.

After months of work and searching for replacement parts such as the firing mechanism, the gun fired its

first salvo in Alexandra on Armistice Day in November last year.
The men are now looking for their next project and are eying up the 105 Pack Howitzer sitting in the little reserve around Clyde's war memorial.

Surprise packages arrive

Local alpaca owners, Julie and Lew Davie were expecting one of their females, Camilla, to give birth in March - but nothing happened. Then at the end of last month, returning from a trip to the supermarket, Julie spotted a new addition in the paddock. But three days later, she was most surprised to discover a second cria (baby alpaca), the offspring of Rocabella.

Both births happened during several days of hard frosts but the babies were more than able to cope. Alpacas are cold-hardy; they graze all year round at an altitude of 3500 - 5000m above sea level on the Andes mountains in South America. They are bred for their fibre which is similar to wool.

The mother carries her baby for just over 11 months before birth and the cria is on its feet within 30 to 90 minutes.

Both cria, Autumn (male) and Winter (female) are doing well and have



covers on to help with the winter cold, although Julie says that's probably due to her worry rather than their need.



Funding Increase for Dunstan Hospital



Great news for Dunstan Hospital!

Hospital staff and Central Otago Health Services are delighted to receive an increase in funding for the 2016-2017 year by the Southern District Health Board.

The increase puts the hospital a little bit ahead of where it was before funding was slashed last year. In addition, the Health Board has formally recognised the population in Central Otago is growing by 2.53% per year.

Some of the changes that were made last year in response to the funding cuts were good ideas that will stay, but the hospital says the community can be assured that the patient care they have always received will continue.

Queens Birthday Honour

Congratulations, Dr Garry Nixon.

The Dunstan Hospital medical officer has been made a Member of the New Zealand Order of Merit for services to health.

Dr Nixon, a specialist in rural hospital health services, has been at the hospital since 1992. He introduced several speciality training modules to benefit rural patients and one of those has been recognised as a world-class programme of special benefit in remote areas.

Dr Nixon is a distinguished fellow of the Royal New Zealand College of General Practitioners. He's a director of the Dunedin School of Medicine's postgraduate rural medical programmes and also serves as a researcher, teacher and lecturer at Otago University.



Dr. Garry Nixon

Wondering what was going on in the Alexandra Bridge Club building on Saturday, June 11? A production crew was taping a television commercial for Mainland Cheese. The company must like Clyde: there was a two-day shoot in November, 2007, which closed off part of the historic precinct to traffic. It was also held during unseasonal hot weather which started to melt some of the cheese used for the commercial.

Praise for Heavy Vehicle Ban in Clyde

The Central Otago District Council ban on heavy trucks from some streets in Clyde's historic precinct has been welcomed by businesses.

The restriction applies to vehicles weighing more than 11,000kg which means heavy trucks and trucks with trailers will not be able to use Clyde as a detour.

Business owners and staff spoken to by the *Dunstan News* were unanimous in their approval.

Hartley Arms Backpackers owner, Leanne Downie: "It's a great idea for safety reasons. The road is narrow and, with cars parked on both sides, it turned into a one-lane road for a long stretch. There wasn't room for big trucks anymore."

David Ritchie, owner of Olivers: "Over summer so many people are cycling or walking around the historic precinct. It'll mean a safer environment enjoyed by all."

Apart from the safety issue, the ban will help protect the heritage stone buildings.

Lisa Robertson, manager of Olivers cafe, said she could feel the building shake as heavy trucks went by and so did Maree Davidson, of Dunstan House. Leanne Downie said Hartley Arms was particularly vulnerable to vibrations because the building now sits below the ground level after years of gradual build-up of footpath and road seal.

The restrictions take effect on July 1.

Clyde Mid-Winter Market

The annual mid-winter market fundraiser for the Clyde Playcentre will be held on Sunday, July 3 at the Clyde Memorial Hall.

Market organiser, Marjan Lousberg is taking bookings for stalls but if you want to be inside the hall, the advice is to get in sooner rather later because space is limited.

This market has grown in popularity over the years and attracts a large crowd of people. Marjan promises lots of food including a spit-roast lamb and BBQ, a cake stall, coffee cart, raffles and kid's entertainment.

The market runs from 10am-2pm. Stalls are \$20 and there are tables to rent for an extra \$5 if you haven't got one.

Email Marjan at midwintermarkets@gmail.com

Missed a copy? The 4 Square, The Dairy and Challenge have spares!

Got News? Upcoming events? Contact Louise at 449 2119 or email lojo.rico@xtra.co.nz



Barbara Wallace (left) with Clyde Dairy manager, Pat Jenkins.

Clyde Dairy Reopens

The Clyde Dairy in Sutherland St is again open for business.

The new owner lives in Tauranga but the shop's manager, Pat Jenkins, is a familiar face to many Clyde people.

Pat has worked at the dairy under three previous owners but, this time, she is running it with the help of baker, Barbara Wallace.

"It's great to be back here again," Pat says, "and it's great to hear the comments from people who are pleased the dairy is open again."

The pair is busy restocking the dairy and working to re-establish the standard of their fish and chips. They also want to improve the take-away menu and have already produced new burgers.

Barbara is promising fresh baking every day.

The dairy's winter hours are from 8am to 7.30pm.

Local Historian in TV Documentary

Clyde Historical Museum's curator John Hanning will be sharing his knowledge on television about an event that sent ripples of shock and horror throughout the Dunstan goldfield.

John was interviewed recently by an Auckland documentary crew about the 1870 robbery of gold bullion and banknotes which had been stored in the prison cell in Clyde.

The gold escort from the Arrow and Cromwell diggings stopped overnight in Clyde and the temptation was too much for a shoe-maker from the Arrow (Arrowtown) and a Clyde police constable.

The crew, from Top Shelf Productions, was filming at Cromwell as part of a series called *Heritage Rescue*. After learning about the robbery they decided to hi-tail it to Clyde to interview John for the programme.

If you want to hear what happened, and if the gold was recovered, tune into Choice TV on Freeview or Sky, Channel 24 on Sunday, August 7 for the first episode of the series.

150 Years Ago ...

The Bachelors of the Dunstan district gave a grand ball to the Benedicts at the Victoria Theatre. The affair was a most unqualified success and exceeded anything of the sort given on this goldfield. About 80 couples were present, dancing being kept up to a late hour. Visitors came from all quarters, some even from St Bathans. The township of Clyde has not been so full of people for many a long month. (Otago Daily Times, 25/7/1866.)



No, not Spring yet! See story on back page.

Renaissance Romp in Heritage Church

The small talented group of thespians who performed in Clyde's St Michael's Church last April are back with more entertainment.

The group presented readings and music celebrating the birth of William Shakespeare and commemorating his death; this next appearance takes the audience into a delicious romp through the Renaissance.

Taking up the director's reins again is Rozena Hallum along with her cast, Juliet Clark, Kelly Keenan and newcomers, Louise Joyce and Barry Gibbons, while Beth McArthur again provides the musical accompaniment on the church organ.

Renaissance Romp introduces the wit, wisdom and music of the era's leading lights which includes Chaucer, Shakespeare, Ben Johnson,



Beth McArthur and Kelly Keenan discuss the musical score while Juliet Clark looks on.

Barry Gibbons and Rozena Hallum giving their scripts serious study.

Elizabeth 1, and others. Comedy is presented in several saucy verses and in a modern ending to Shakespeare's play, *Hamlet*.

Following the performance the audience is invited to "partake of mulled wine, light fayre and good cheer" in the church hall. Entry is free but the minstrel's hat will be passed around with donations going to St Michael's & All Angel's Church. The performance takes place on **Sunday, August 28 at 2pm.**

KAITANGATA COAL

OTAGO'S FINEST PRODUCT
Best for use in the home because

1. IT LIGHTS QUICKEST.
2. IT BURNS CLEANEST.
3. IT LASTS LONGEST.

CLEAR
BRIGHT
NO SOOT

Your Merchant
supplies it.

KAITANGATA
COAL CO., LTD.
DUNEDIN.



From *Dunstan Times* 1929

Dunstan News

July/August 2016

Volume 4 Number 5

Clyde's Wilding Pine Problem

Rory Butler recently attended a lecture given by Phil Murray of the Central Otago Wilding Pine Control group concerning the proliferation of wilding pines in our region. His talk was a real eye-opener as Rory explains.

While it is obvious to Clyde residents that the trees are spreading across the hill behind the town, many perhaps do not realise the extent to which this is rapidly becoming a major problem. If you have any doubts, just look at the photographs below.



The photo on the left, taken in 1911, shows a single row of pines. The photo on the right shows that same scene today with the hillside covered with pines.

Most of us like trees; they are natural, they add to the diversity of the landscape, they take CO2 out of the atmosphere and they look nice. But wilding pines are a huge problem because they spread - very quickly.

Wind-blown seeds from these trees generate many new trees and it takes about seven years to reach the stage where they themselves start regenerating. The upshot is that, unless checked, the trees spread at a rate of about 15% per year.

If we ignore this problem, they will, within a few years, spread from the 22,000 hectares already occupied to cover almost half of Central Otago. This seems an alarming statement, but the facts speak for themselves. The consequences of doing nothing are very serious to both the economy and the environment.

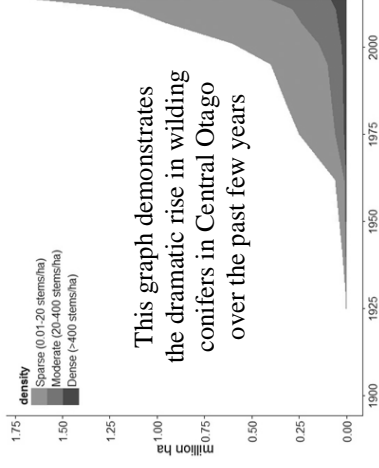
The Government has recognised the seriousness of the problem and has put a 15-year strategy in place, allocating \$16m for control measures over the next four years.

The Central Otago District Council has allocated \$20,000 and both LINZ and the Otago Regional Council have allocated funds.

It is hoped community awareness will lead to wilding pines being declared a noxious weed by the Otago Regional Council, so that rapid progress can be achieved in their control and eradication.

For further information contact Phil Murray at 027 221 8133 or email

philh.murray@extra.co.nz



Years of Service Recognised

One of Clyde Theatre Group's long-standing members was almost speechless after receiving an unexpected honour this month.

Carol Haig was overwhelmed to be made a life member at the Group's AGM in recognition of the 25 years as a member and for the huge range of services she has contributed over that time.

As a life member, she joins seasoned performer and director Pat Lines, who also gave a tribute to Carol. She spoke of Carol's loyalty and dedication and for willingly taking on many duties such as stage manager, front of house, back stage crew and spending hours finding suitable plays for the group to perform. The biggest praise from Pat was Carol's reliability which, she said, was a huge help to directors.

Carol is on the committee and has been president. But the one position you won't find Carole is on the stage.

"I can't remember lines," she says.

However, that just might change. Carol took part in *Fifteen Minutes of Fame*, organised by the Theatre Group, where non-actors could experience being on stage and under the spotlight. The skit in which she appeared will be presented at a variety show on August 21 at the Alexandra Memorial Hall.

Congratulations also to the Theatre Group's president, Joy Ramsay, and Alexandra Musical Society member Barry Gibbons who are taking part in Theatre New Zealand's TheatreFest. They are performing a one act play, *Carol & Nev*, which has been selected as one of three plays to compete in the TheatreFest finals for the lower South Island. This takes place at The Globe Theatre in Dunedin on August 20. The national finals will be held next month.



Carol Haig (right) still reeling from her unexpected honour with Clyde Theatre Group president, Joy Ramsay.

Tangling With Clyde's Little Lights

Clyde residents were treated to a little lunchtime entertainment a few weeks ago when a large truck (was it within the new weight limit?) driving down the main street became entangled with the overhead lights strung across the road.

The red-faced driver had to clamber on top of the truck to unhook the lights before quickly driving away. We understand there was not a lot of damage to the lights, although several were not working.

Hello book lovers ... did you know there is a Book Club in Clyde. Members meet on the second Saturday of each month from 10am at Olivers in Clyde. It's been going for a little over a year now and is coordinated through Central Otago Libraries. If you are interested, contact Helen Rendall at Alexandra Library.

Clyde Fire Volunteers Fighting Another Challenge

Two of Clyde's Fire Brigade's volunteers are in training for another stair challenge – this time for Melbourne's "Climb for the Kids".

Peter Robertson and Tim Paulin have been members of Clyde's fire fighting team in the annual Sky Tower Challenge, but this hardy pair also decided to enter next month's challenge in Melbourne.

"We got really fit for the Sky Tower challenge and further training will keep us fit and healthy which we have to be if we want to be fire fighters," says Tim, "so we decided to give it a go and it is for a good cause."

The Murdoch Children's Research Unit which benefits from the run has a team of researchers dedicated to finding ways to prevent a wide range of children's health issues.

Peter and Tim will take their full turnout gear except their breathing apparatus cylinders which will be supplied by the organisers. They, and about 15 other New Zealand fire fighters, will compete with a total of 500 firefighters.

It is the first time volunteers from Central Otago have entered this competition which takes place on September 3 at the Crown Metropol Hotel in Melbourne.

Mid Winter Market

A smaller crowd and slightly fewer stalls did not put a damper on Clyde Playcentre's annual mid- winter market last month.

The committee raised \$3500 which is likely to go towards replacing bark in the playground. Re-barking is overdue and expensive.

The committee would like to thank market sponsors, especially Fulton Hogan. It is also looking for a handyman who might be prepared to help out from time to time with a few maintenance jobs. If you would like to help email Rebecca at: rjthomas.nz@yahoo.com



Hartley Arms

Strange Case of the Disappearing Doors

Observant people might be able to recognise two of Clyde's oldest buildings in the historic precinct by looking at doors.

Over the years, with each resealing or building up of the pavement, the front doors of the two properties have slowly sunk well below pavement level.

One is the Hartley Arms backpackers, thought to be Clyde's oldest stone building built in 1866.

The second building is the deteriorating wooden frontage of the former *Dunstan Times* office and printing press.



Dunstan Times

Cleaning Up Rubbish A Never-Ending Effort

It is not a pleasant job cleaning up rubbish and broken bottles but that is a task a group of volunteers feel they must do to in an effort to keep local roadsides clean.

The annual clean up of Earnsclough Rd took place earlier this month and more than two dozen members of Keep Alexandra Clyde Beautiful and the Clyde Off-Road Walkers collected at least 20 bags of rubbish. What is most exasperating is that it need not happen.

"I find it disgusting, the amount of rubbish – glass, plastics, food containers and wrappers – that is thrown from car windows," says Ann Wills, chair of KACB. "We clean up and have been doing it for years now, but the responsibility for it has got to turn around."

The "not to litter" message, which has virtually been a mantra for decades, is somehow not getting through. It is to be hoped that children at today's enviro-schools which emphasis caring for the environment will change the attitude of our younger

.....

Wanted – New Home For Indoor Bowls Equipment

Indoor bowls at Clyde are on the same sized rinks as outdoors, with the same bowls. Earnsclough Hall has some smaller indoor bowls which are available to a good home. Phone Louise 449 2119 or email lojo.rico@extra.cxo.nz

.....

Museum Opening

Clyde's Historical Museum in Blyth St will reopen on Tuesday, September 27. The museum is run by volunteers and if you would like to help please phone Carol Haig on 449 2557.

The current hours are between 2pm and 4pm although more volunteers could mean opening times are extended. The Railway Museum at the Railway Reserve at the top of Fraser St is open when the bike company based there is open.



September 2016

"Keep Clyde As It Is" : Survey Results.

Clyde residents have overwhelmingly declared that what they value most about Clyde is its peace, character and its small size.

This is one of the results from a survey of the community and district plan by the Central Otago District Council in November last year.

The council's district plan is now under review and the results will help the council gauge future zoning requirements.

Other high-ranked values are the strong sense of community, local history and heritage, services, natural environment and recreational facilities and activities.

The most commonly mentioned reply to a question on people's vision for Clyde was that the town should remain as it is – a small, safe place where people want to live and visit – and not become another Wanaka or Queenstown. The second most popular answer was that the town's growth should be thoughtful and controlled and retain its unique character. Good infrastructure such as footpaths, street lighting and public transport was third ranked, followed by no heavy traffic in the main street and the preservation and protection of heritage buildings.

A majority favoured residential growth exceeding the current boundaries, but no further than the Alexandra end of Muttontown Rd. A few wanted it to go further.

A majority answering the question on section size did not want any change with many commenting that large sections were important for space and privacy, providing green areas, trees and gardens. A number believed large sections were great for extended families and holidaymakers because there was space for caravans, tents and extra vehicles. Fewer thought the sections were too large to look after, particularly for the elderly, and that the increased cost of water made large sections too expensive.

The need for a retirement home or village featured prominently in the responses.

Survey forms were sent to all Clyde residential property owners (about 900) and 251 were completed and returned. The 25% return might appear low but the experts say it is a good return. **(More survey stories, see pages 2 and 3)**

.....

Renaissance Romp in Clyde

More than \$300 was raised for the upkeep of Clyde's Anglican Church, St Michael's and All Angels after a stirring performance by a group of experienced actors and actresses.

Under the direction of Rozena Hallum, a *Renaissance Romp* played to a near full church with poems, songs and scenes from renaissance plays with a few modern, irreverent versions thrown in for good fun. It is the second such event staged at the church and more will be held.



From left : Barry Gibbons, Louise Joyce, Juliet Clark, Rozena Hallum and Kelly Keenan



Ann and Barrie Wills with the rubbish they collected near the Alexandra end of the Earnsclough Rd.

.....

TheatreFest Champions!

They did it! Congratulations to Joy Ramsay, president of the Clyde Theatre Group and Barry Gibbons of the Alexandra Musical Society for winning the TheatreFest one-act play national final. Thirty-three groups throughout the country entered the competition and the finalists battled it out in Invercargill on September 10 with Joy and Barry winning for their performances in *Carol and Nev*.

.....

Local Body Elections

The elections take place on Saturday, October 8. Candidates for the Community Board Earnsclough-Manuhierikia Ward are : James Armstrong (sitting member from Laurer), Nadia Fodie (Earnsclough) and Russell Garbutt (Clyde). Two members are required.

Clyde Sewage – A Future Issue

The current sewage system for Clyde residents is shaping up to be one of the big challenges the town will have to face.

A common thread in all the replies to the community and district plan questions in the survey related to sewage. All Clyde properties use septic tanks but many people who responded to the survey said that if the demand for sections grows the sewage system would have to be addressed first.

"The council would have to look at zoning. If there is residential growth beyond Sunderland St, the question is, how do we deal with effluent," Louise Van Der Voort, the council's planning and development manager said.

Clyde's sewage is already a subject of discussion by the Otago Regional Council which has involved local iwi and Southern Public Health. Discharge permits are issued by the regional council and testing the ground water is a regular practice carried out by both the district and regional councils.

But there have been major issues. Dunstan Hospital is experiencing difficulties with its sewage system and, last summer, it was impossible to miss the odour from Olivers septic tanks which local butcher, Tony Tohill, described as "an embarrassment to the town".

Owner, David Ritchie, who invested in an expensive sewage system when Olivers was rebuilt and restored, says experts he called in think they have solved the problem.

"They are not sure what caused the odour, but we have changed various chemicals and we think we've fixed it."

The yeast from the brewery, which has continued to brew beer, was not an issue and the historic precinct was odour-free during the winter months.

Clyde Survey: What the Town's Youth Say

The council considered the views of people under the age of 18 were important and included three questions in the community part of the survey. Fifty-two responded.

In reply to the question on what they love to do in Clyde, more than half of the comments involved recreational activities such as bike rides on trails and to school, swimming, boating and fishing, and walking the tracks. Playing sport was important and going to the movies, cafes and restaurants also popular.

Nearly half of the comments in response to the question on what they would like to see in Clyde in future related to recreational activities. Upgrading the playground, improving the camping ground and a bigger park were mentioned. There were suggestions for new activities such as a skate park, an outdoor basketball court, a go-cart track, a BMX track and zip wire across the river. Some wanted more shops and an ATM.

The third question looked at the one thing they would change about Clyde. The majority replied there was nothing to change, that the "town is great as it is". The oddest comment was wanting "snow settling on the ground".

However, a common theme across all the responses was the lack of a swimming pool in Clyde. It seems our young people miss the pool and would like a new one.

Market Days In Clyde

Historic Clyde (formerly Clyde on Sunday) will be holding three market days over summer : Monday, October 24 (Labour Day) as part of the Cuisine @ Clyde event, Monday, January 2, and Sunday, February 5. (Waitangi Weekend). The markets run from 10am until 2pm. For inquiries phone Chris Cockcroft on 4492 287

Understanding Council Plans

District Plan: A policy document which assists the CODC carry out sustainable management of the district's natural and physical resources under the Resource Management Act. It includes managing the use and development of land and contains policies, rules, and objectives to ensure future management. It covers hazardous substances, noise, water activities and subdivisions and determines whether or not resource consents are required for an activity.

The Long Term Plan (LTP): A long term strategic planning document updated every three years. It sets council's budgets and capital projects for the next 10 years along with strategic policies and service levels developed in consultation with local communities.

Community Plan: A set of objectives and projects identified by the local community at public workshops and meetings to improve their town and provide a guide to protect what people value about their town. The plan is facilitated by the district council but is driven by local people interested in the future of their community.

Survey results are available at the council offices and at www.codc.govt.nz

Prize Giving at Winter Bowls

Winter is over, as is indoor bowls at the Clyde Bowling Club.

Ant McLean won the championship singles and combined with

Mayor Tony Lepper to win the pairs and, again, with Les Wilson, Russell Dennison and Neville Kemp for the fours title.

Steve Archer won the junior singles. Club

secretary Lynn McArthur and Trevor Robinson won the veteran pairs and Des and Ray Paulin and Leon van Boxel the championship triples.



First-year bowler Kathy Richards with her two singles trophies.



The worst! From left, Ric Oram, Barbara Cruikshank and Verdun Burgess with their wooden spoon.

Whew! Made It To The Top

Peter Robertson and Tim Paulin, members of the Clyde Volunteer Fire Brigade, raced up the 28 floors of the Crown Metropool Hotel in Melbourne this month. They were among 386 competitors. Peter finished in 5.04 minutes in 54th place, and for his age group (40-49), 14th out of 87. Tim finished just a tad behind at 5.20 minutes and was 89th. In his age group (40-49), he finished 25th. About 15 New Zealand fire fighters took part in the event to raise funds for the Murdoch Children's Research Institute.



Peter Robertson and Tim Paulin at the top

Generous Donations from Local Group

A club which has kept a fairly low profile in Clyde and is responsible for helping numerous organisations over a number of years has just donated \$2000 to the Earnsclough Rugby Club for lighting and \$1000 to Clyde Playcentre.

The Dunstan Social Club, a fairly informal group of up to 30 people, meets every few months in the Dunstan Hotel to have a chat and a drink and run raffles every Saturday night. It is the money from those raffles that the group donates to other community groups.

Jess Panui, the lead educator at the Playcentre, says the donation has helped the Playcentre cover the playground garden with bark chips. The Playcentre contributed \$4000 from its own funds and the balance of the cost was subsidised by Fulton Hogan.

"We are lucky we have a great community who give us support," she says. "We get some funding from the Education

ministry but we are a non-profit group and we have to fund raise quite a bit."

Novel Fund-Raising Evening

Clyde residents are being asked to support a rather novel fundraising event at the District Club in Alexandra on October 19 at 6.30pm.

The local branch of the SPCA is holding a fashion parade of pre-loved, high quality fashion clothing from Wanaka, Queenstown and elsewhere from size 8 up to very large. Modelled by a collection of local volunteers, these complete outfits, including shoes, can be purchased on the night. As well as human models, locally re-homed dogs will also pad down the cat-walk (dog-walk??)

There will also be a silent auction and money raised will be used for more units to house SPCA cats. SPCA promises a fun night out with music, supper and a complimentary drink for a \$20 entry fee. Tickets are available from SPCA store in Alexandra.

Cuisine @ Clyde

A heap of good food is on the menu for this year's Cuisine @ Clyde over Labour weekend. The foodfest starts on Friday night, October 21, with a three course set menu at Paulina's followed by a movie at the cinema next door. Tickets cost \$55 and are available at the cinema.

On Saturday, Olivers garden is the venue for a Brewfest with live music and a pig on a spit from 11.30am. Tickets \$10 from Olivers. The Sunday night programme is a wine and food matching dinner in Olivers restaurant. Wine experts, Alan Brady and Sam Kim will be there to discuss the wines. Tickets \$95 at Olivers. A market will be held from 10am in Lodge Lane on Monday.



The Changing Face of Central Clyde



What was once a bare block of waste land in central Clyde has been transformed over the past seven or eight years to become a centre of shops, businesses and new houses. It is probably the biggest growth the town centre has seen for at least 60 or 70 years.

Bounded by the then Fache St (now Holloway) and Naylor St, the block was developed by local builder Mark Laing and already includes a restaurant and purpose-built cinema.

New buildings are currently under construction and there is still land available for more growth. The new buildings will house a photography shop and an art gallery as well as accommodation. The area previously occupied by Bike It Now is now available for two new shops: a manufacturing jeweller and a chocolate-gelato store. (see story Page 3). The reopening of the revamped Olivers with a cafe, delicatessen and boutique brewery has brought huge numbers of visitors into central Clyde.

In fact the whole of Clyde is undergoing a resurgence with an increase in the permanent population along with more new houses. The demand is such that house prices on average, are higher than properties in Alexandra.

The question for Clyde residents is how much do they want their town to grow and how this can be managed. The response from the majority of people in a recent Central Otago District Council survey shows people want Clyde to stay as it is.

It might be time now to hold another public gathering to update the Clyde Community plan and come up with a blueprint for the future.

Comings and Goings We farewell long-time proprietors of the Dunstan Hotel, Nicky and Tom Blaikie who have sold the business and welcome Robyn Gallagher who is managing the hotel for its new owners, Kevin and Dansoa Gallagher. A welcome also to Paulina Corvalan, formerly of Chile, whose multi-cultural restaurant beside the cinema in Holloway St, is proving so popular, that it is regularly booked out.

Relax and Enjoy Books at Clyde Club

It is a sight to gladden any book lover's heart: not an e-book in sight but the real thing. Stacks of books piled on a table, cups of coffee and good chat about the literary world.

This is the scene every second Saturday of the month at Olivers when members of the Clyde Book Club meet to talk about and recommend what they have been reading.

Helen Rendall, former librarian at the Clyde Public Library and now at the Alexandra branch, says the club is a little different from others because everyone does not have to read the same book for discussion. Instead members, and there are more than 30, bring books they have read and enjoyed and talk about them. Helen also brings a selection of books which members can take home.

"There's no pressure on anyone to talk if they don't want to – you can just sit and listen," Helen says. "It's also a good place to meet people."

The club is co-ordinated through the Central Otago libraries and all you need to join is to have a current library card. The meetings start at 10am and usually last for about an hour. For further information email Helen at: Helen.Rendall@codc.govt.nz



Which book to take home? (from left) Elaine O'Brien (Clyde) and Jean Chamberlain (Cromwell) sort through books to read.



New Information Panels on Heritage Trail

Promote Dunstan has installed two more information panels on its self-drive heritage trail around Clyde, Alexandra and the Manuhirika area.

There is now a panel outside the main entrance to Gallop Station and one at Chatto Creek bringing the total to six. Another five are yet to be completed.

Lesley Middlemass (left), owner of the Chatto Creek Tavern, says she is excited by the panel outside the historic building. "It has already attracted huge interest from rail trail cyclists, visitors and locals," she says.

The panels complement the Self-Drive Heritage Trail brochure which is funded and produced by Promote Dunstan.

Clyde Website : In addition to its own website, Promote Dunstan hosts a Clyde website (www.clyde.co.nz). It tells a little about Clyde and also advertises businesses operating in or close to the town. These advertisements are free and if you wish to place one, please email us at info@promotedunstan.org.nz. We would also urge people whose businesses are on the website to check those details and let us know if they need updating.

Achieving the Dream – Clyde's Gelato Parlour

Debbie Paton of Earnsclough, dreamed for a decade or more, of opening a shop in Clyde specialising in gelato (Italian ice cream) and sorbets. That dream was realised late last month with opening of *Nom Nom* in Holloway St.

"The business has come together as though it was meant to be," says Debbie.

"I've had lots of community and District Council support and everyone is really positive."

The products are made on site and there is an array of flavours for the gelato which is made from milk and contains less than 5% fat as well as ice-cream and sorbet which is a refreshing concoction of ice with various flavours.

Nom Nom will also stock Debbie's handmade chocolates which made their debut at the Alexandra summer markets last season with great success. She attended a chocolate making course in Auckland and has experimented with a number of flavours. She believes chocolates must have at least two fillings and is offering delights such as honey, bourbon, caramel and marshmallow, raspberry, apricot and caramel, and sweet and sour lemon and lime.

Debbie is already well known for her artistic abilities including limestone sculptures and she does not intend to give that up. She will eventually employ up to three full-time staff to run the shop which is open daily.



Debbie Paton outside her new business

The only blot on her opening has been a complaint to the district council about the royal purple colour she has painted the plaster around the shop entrance.

Showcasing Alexandra Basin Wines.

Clear your palette and prepare to indulge in a wine lover's dream by sampling more than 50 wines from winegrowers in the Alexandra basin.

The annual tasting of the new season's wines takes place in Oliver's garden in Clyde on Labour Weekend Sunday. It gives people a chance to meet and talk to the wine makers and growers as well as taste their wares.

A first time visitor to the Alexandra basin is special guest Sam Kim, a wine judge for the past 19 years, who will give a talk about wine.

A ticket to the event costs \$25 but that includes all tastings, a branded tasting glass and booklet with information about the wines and vineyards.

Support Group Planned for St Michael's Church

Moves are underway to establish a group of people to support Clyde's heritage anglican church, St Michael and All Angels.

It is hoped that people in the community who care about Clyde's historic buildings might be interested in becoming part of the group.

Group co-ordinator, Rozena Hallum, is compiling a list of people willing to help at odd times in some way or other. But, she insists, there will no pressure on people to do so. Her main objective is to keep people informed of events and other happenings at the church.

If you are interested, phone Rozena (448 8943) or email rozenah@xtra.co.nz

Clyde Theatre's Travelling Road Show

Clyde Theatre Group is taking to the road for the first time to bring theatre to the people.

The group is performing two one act plays in the Earnsclough and Ophir community halls as well as the Clyde Memorial hall.

A travelling theatre show had been talked about in the past, but the opportunity came with these two plays because the props were able to be transported by a trailer.

Last Panto in Little Grimley, by David Tris-tram, finds Gordon, Margaret, Joyce and Bernard who run the village amateur dramatic society, tackle the Christmas pantomime with riotous results.

The Rack by Louise Nielson is where you meet Mary, a maker of exotic costumes for hire, her daughter Charlotte, a single mother, a friend who

has suffered an emotional upheaval and Helena who brings more drama to the action. The show opens at Ophir on Friday, November 25 at 7.30pm, Clyde on the 26th at 7.30pm and a matinee at 2pm at Earnsclough. Tickets are \$20 from the Alexandra i/site.

Busy Times Ahead For Historic Clyde Church

The Friends of St Michael and All Angels Anglican Church in Clyde are planning a third performance in the church by the newly named St Michael Players. The group presented a homage to Shakespeare in April and followed that with a Renaissance romp in September.

The Player's next show is *Christmas Around the World* with Christmas stories and music presented on Sunday, December 11, at 5.30pm followed by refreshments in the garden.

A plant table with an honesty box is also to be set up outside the church to raise funds for the building's upkeep and, from November 30, the church will open to visitors on Tuesdays and Wednesdays from 10am to 4pm. If anyone would like to assist with these projects either by donating plants or being on site to welcome visitors, please phone Lois at 449 2328.

Bishop Kelvin Wright of the Dunedin diocese will hold a day of reflection for people wanting a quiet day of peace, prayer and contemplative literature on December 10 from 10am to 3pm.

Looking to buy wine for Christmas? Well look no further than wines just released by wine producers in the Clyde-Alexandra area. Here's how wine expert, Sam Kim, described the wines at the recent tastings in Clyde.
Pinot Gris - great acidity, buy two, drink one and save one.
Riesling - lovely depth of flavours.
Rosé - charming and delightful, drink for breakfast.
Pinot Noir - not big but elegant, flows beautifully and ages well.



November 2017

Dunstan News

Volume 4 Number 8

Volunteers Needed to Combat Weed Explosion

A warm Sunday afternoon and a lone figure

toils on the gentle slope just above the start of the Clyde end of the millennium track by the Clutha bridge.

Lynne Stewart is on a dig – not an archaeological one, but an enviro-dig to contain the explosion of weeds and grasses that have shot up during the unusually wet spring Central Otago is experiencing.

Lynne, a member of the community Project Gold Plantings, is working on a large swathe of public land by the track desperately trying to rescue small native plants from being smothered by the waist-high weeds. Larger shrubs are also being engulfed.

"I'm discovering little plants, that even with protective plastic around them are completely hidden," she says. "We planted many native plants here. Their flowers will provide nectar to native birds such as the tui and bellbird (korimako)."

But Lynne needs help and is calling a series of working bees for volunteers to help weed the immediate area around each native plant.

Anyone who can help are asked to meet by the bridge on Thursdays for a weed bee from 9am to 12pm. Even an hour's work would be appreciated. Bring something to drink, a hat, gardening gloves and a smile!

Meet "Colin" Our New Man at Clyde Railway Station

A relic from the past - "Colin" takes pride of place at the Clyde Station Museum. He's dressed in the station master's uniform kindly loaned by the Clyde Historical Museum. The mannequin and stand was funded by Promote Dunstan and is on display behind a protective panel of perspex at the Railway Museum.

Meanwhile, the Clyde Historical Museum in Blyth St is now open between the hours of 2pm and 4pm. The scheduled opening had to be delayed to give the new varnish on the foyer floor time to cure.

Missed your copy? Pick me up at the Four Square or the Clyde Service Station. Got any news? Phone 449 2119



Lynne tackles a giant thistle



Introducing New Local Board Member Russell Garbutt

Community support received during his wife's terminal illness prompted Russell Garbutt to stand as a candidate in the recent local body elections. He contested and won a seat on the Vincent Community Board representing the Earnsclough-Manuhirikia ward.

Russell lives in Clyde and was touched by the support he was given by friends and neighbours, Dunstan Hospital and the hospice at Cromwell.

"The community has been extremely good to me; hopefully, I can do something for the community," he says. "Maybe it's the size of Clyde which is small enough for people to know and care for each other."

And in return, Russell intends to support the community. He believes there is a keen interest by people who want to know what's going on and want to feel that they are involved in decision-making.

"I will definitely pursue that and I hope to act as a conduit between Clyde and Earnsclough to the board," he says. "I am happy to talk to anybody at any time."

He has some concerns about Clyde and its recent growth spurt because of looming issues about sewage and sections which are in short supply.

"My impression is that Clyde people are largely supportive of what's gone on in the village," he says. "Businesses serving people on the rail trail are bringing job opportunities to the community, but there might be a problem in future as to where to house those workers."

Russell, who comes from Dunedin, spent his working life in television as a technician. After time overseas, he came back to work in light entertainment as a technical producer and finally graduated to management. He was the last manager of Dunedin TV before the establishment was downsized. He then became the manager of Otago University's media production unit. A holiday in Clyde led him to buy a section in 2000 and eventually to build a home.

Russell hopes Clyde will never become a Queenstown or Wanaka but is able to retain its niche as a relatively quiet place. The protection of the land between Alexandra and Clyde is important and he hopes Clyde will never end up as a suburb of Alexandra.

"It has its own character and charm and I hope it won't change too much," he says. "The only change I would like to see is no wilding pines, gorse or lagrosyphon (weed) in Lake Dunstan."

To contact Russell: phone 4492 2254/ 020 4039 0424 or email: russand-bev@clear.net.nz

Did You Know that nearly 70 percent (1880 people) of the eligible voters in the Earnsclough-Manuhirikia ward voted in the election? It was the highest return of all Central Otago wards.

New Clyde Business Turns Back the Clock

Clyde has a manufacturing jewellery business in town for the first time in 144 years.

Roy de Cort opened his shop and workplace in the retail block on Holloway St late last month, following in the footsteps of Robert Barlow, who operated his manufacturing jewellery and watch-making business in the main street from 1863 to 1872.

A manufacturing jeweller not only sells jewellery but also designs and makes jewellery, makes pieces to order as well as making repairs.

"It grates me a little that the word 'jeweller' has been kidnapped," he says. "Very few jewellery shops today actually have a jeweller there. They are retailers and they have to send their repair work to someone like me."

Roy's family emigrated from Britain when he was nine and, after an initial apprenticeship as a tool maker, he followed his artistic instincts. He was lucky enough to be taken on as an apprentice in the workshop of a manufacturing jeweller doing repairs and one-off specials. He graduated to designing jewellery and, today, his speciality is pieces in the art deco style.



Roy was in charge of the manufacturing branch of Pascoe's, the big jewellery firm in Auckland, for some years but this trade is now steadily declining in New Zealand. There are fewer manufacturing jewellers than there were 30 years ago because, he says, so much jewellery is coming into the country from overseas. He is unhappy he cannot pass on his skills to an apprentice but he cannot afford to take one on.

He moved to Queenstown in 2000 and met his wife-to-be, Maria, then a reporter with the *Central Otago News*. The couple now live in Clyde with their five-year-old daughter.

He describes his job as "really cool", feels comfortable in Clyde and with what he is doing. An unexpected bonus after spending 30 years tucked away in a workshop is making contact with people.

"It really increases the job satisfaction," he says.

While on the subject of new businesses ...

Melanie and Rex Eade, who used to run the Hartley Homestead B & B, have opened an art gallery and shop next to Bike It Now which has moved into the recently completed building alongside their previous premises.

Information Kiosk: If you or your organisation would like to display a notice about events or projects, drop in a poster or information sheet to Leanne in Hartley Arms opposite the Lodge Dunstan.



Louise Taylor (right) stocks up with plants from Dorice Malls at the Earnsclough Community Society fair on November 13. The fair raised just over \$1000.

Ingenious use of Hospital Waste Material

Dunstan Hospital has a new art work in its foyer which is attracting plenty of attention from patients and visitors who cannot quite believe what they are seeing.

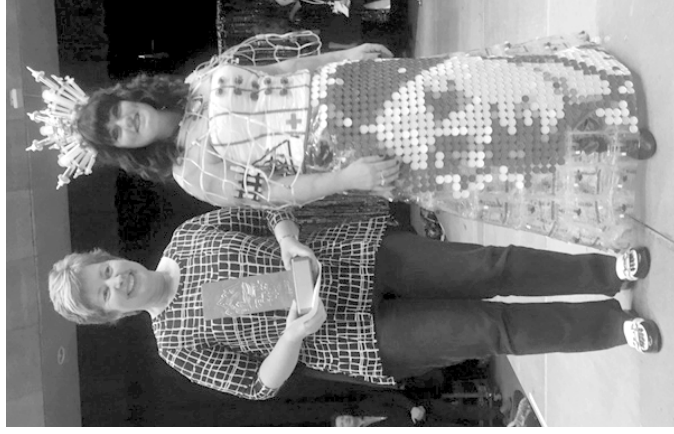
It is a full-length gown complete with tiara and featuring a portrait of Florence Nightingale made entirely of waste products used in the hospital. It scooped the award for the business category in Trashathon, held recently, an annual event organised by the Cromwell Arts Society.

This amazing creation was designed and painstakingly made over several months by hospital administrative assistant Keitha Warren. Her unique design used non-toxic materials such as intravenous fluid bags, IV tubing, syringes and medication vial lids - and loads of imagination.

There was stiff competition with some 15 businesses entering this category.

The contest is an annual event open to anyone who can turn what some would consider trash into fashion. Contestants this year came from all parts of Central Otago and the only requirement was that the garments or accessories were made using rubbish or recycled materials.

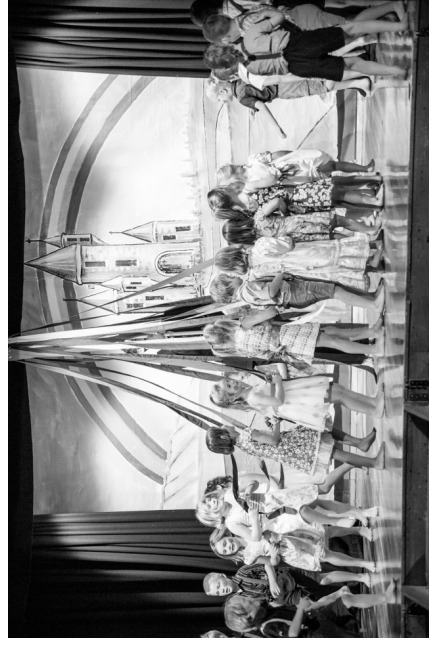
The gown will remain in the foyer until the middle of January.



“Homage to Florence”, a gown inspired by the pioneer and founder of modern nursing. Keitha Warren (left) used 900 medication vial lids to make the Florence Nightingale gown modelled by Kelly Hilton.

Clyde School Annual Production Hits A High Note

Clyde school pupils have pulled off another stunning end-of-year production with the musical, *The Trouble with the World Today*, written and directed by staff member Sally Lloyd. The story is about a family who took a trip down memory lane watching and singing along with some great movies such as *The Wizard of Oz*, *Singing in the Rain*, and *Willie Wonker and the Chocolate Factory*. The three shows performed by 150 pupils were an instant sell-out. (Lisa Hill Photography)



Thank you to our dedicated team, including Clyde School pupils, who deliver the *Dunstan News*. We wish you and our readers a Merry Christmas and a prosperous New Year.

Mounting Pressure on Clyde's Infrastructure.

Parking, traffic flow and speed, safety and noise in the centre of Clyde were topics discussed at a recent meeting of the Clyde Community Plan group.

There is concern that streets and facilities will come under increasing pressure as more visitors flood into the town, especially over summer.

The group also says there is now a need for a third public toilet in Clyde in addition to the toilet block in the historic precinct and one at Clyde Railway Station.

Central Otago District Council's executive manager of Infrastructure Services, Julie Muir, told the group that an options study will discuss these and other areas of concern. A member from the Community Plan group will join other Clyde representatives at the study meetings. Clyde residents will be able to comment on the proposals when they are completed.



Finding a park in Clyde is not easy these days

Clyde Wastewater Scheme under Investigation.

Investigations into a future wastewater scheme is underway in Clyde by MWH, an international engineering and consulting firm.

MWH, which lists water management as one of its fields of expertise, has been engaged by the Central Otago District Council to examine whether or not there is a need for such a system in Clyde and, if there is, when it might be needed.

The firm will review test data, analyse growth projections and their implications as well as give an estimated cost for the scheme. It will also hold discussions with businesses in Clyde's historic precinct and the Otago Regional Council.

The council says it does not expect to have any information until late February next year. A budget of \$36 million between 2023 and 2027 has already been included in the Council's 2015 Long Term Plan. The investigation by MWH will identify if this is required, if the timing is appropriate and if the estimates are correct for developing the 2018 Long Term Plan.

Talking it Over ... with Russell Garbutt, Vincent Community Board member for Clyde and Earnscleugh.

Russell has offered to keep everyone up to date with board business when it relates to Clyde and Earnscleugh. This report was made after his first board meeting in November.

It's been a busy time over the last month getting to know

various groups and individuals around our incredible community. I have suggested that we have a regular public forum before any board meeting, and this has been accepted. What this first month has shown me is the vital importance of the Community Board and I am thrilled to be part of what looks like an inspirational group.

There's been positive feedback about the effectiveness of our council dog-catcher, but problems remain of wandering or uncontrolled dogs near Dairy Creek where we have some really interesting birdlife trying to nest.

It's wonderful to see how many gardens are blooming, but a little reminder for those with trees and shrubs overhanging pavements: it is difficult for pedestrians or people on mobility scooters to get round if trimming hasn't been done.

Remember, if you want to raise any issue at any time, ring me on 449 2254 or 020 40390424. I'll be pleased to hear from you.

Christmas Celebration at St Michael's Church

Clyde's historic Anglican Church, St Michael and All Angels, rang with Christmas carols, stories and poems by the St Michael's Players who presented *Christmas Around the World* earlier this month.

It is the third production directed by Rozena Hallum to be held in the church this year and, again, a large audience from Clyde and further afield appreciated a variety of serious and humorous items relating to Christmas. Donations made after the performance will help with the upkeep of the church.



Festive fare and bubbles were enjoyed by Leanne and Steve from Hartley Arms, Clyde, and Cath Brock, Earnscleugh, following the performance in St Michael's.

New Trophy Fills A Gap in School Awards

A year seven pupil at Clyde School has become the first to receive a new cup for her contribution to the performing arts.

The proud recipient is 12 year-old Marie McKeen, a member of the school choir and the Harmony and Kappa Haka groups. Maria was also selected because of her other attributes such as courtesy, willingness to learn and her efforts to help others.

The cup was donated by the Clyde Theatre Group after committee member Kylee Murphy, who has two children at the school, noticed that among all the trophies and awards there was none recognising the performing arts.



Maria McKeen

Local Information

The **Library** at the Clyde Memorial Hall is open on Tuesdays from 9am-12 noon and on Fridays from 2pm to 5pm.

The **Clyde Historical Museum**, opposite the Post office Bar and Cafe in Blyth St, is open from Tuesday to Sunday from 2pm-4pm. There are new displays including one featuring kitchens of the past.

The **Walk-Around-Clyde** brochure with stories about the historic buildings and **Clyde's Great Challenge** (really great for children) are available at local shops. And there are several new shops to explore in the historic precinct.

Busy Month for Clyde's Fire Fighters

A group of Clyde's volunteer fire fighters were busy growing moustaches during November showing their support for MOVember, the national movement which highlights men's health.

Local doctor Pragati Gautama came to the station to talk about men's health and also shed light on some common myths as well as potential health threats that are not discussed enough.

A few days earlier, the fire station hosted Employment Recognition, an evening where employers of fire fighters are publicly thanked for their support in allowing their employees time off to



Still with their moustaches (from left): Peter Robertson, Dunstan Brook-Miller, Paul Keen, Barry Nevill, Tim Paulin, Dr Pragati Gautama, Simon Curtin and Gordy Pay.

Weeds Under Control

In our last issue we reported the rampant growth of weeds along the start of the millennium track under the Clyde Bridge that was threatening to take over plantings of native trees and shrubs.

We are pleased to report that thanks to tireless work by Lynne Stewart, helped by husband, Phil Murray, the growth has been brought under control. What is disappointing that, in spite of a request for help, the pair had to tackle it alone.

Welcome to Todd and Sarah Sissons who have added a new gift shop, Folklore, to the line up of new businesses in Holloway St.



Chief Fire Officer Richard Davidson presents a certificate of thanks to Christina Tyrrell representing Fortune Fruit Ltd for its support of the Clyde Volunteer Fire Brigade.

attend calls and training courses held during working hours.

New Faces at The Stone House

An urge to change their lifestyle has brought Arrowtown couple Janine and Jeff Long to take over The Stone House factory and shop in Springvale Rd, pickling and making various delicacies for sale. For more information, email info@thestonehouse.co.nz